

AWS Network Services: An Overview

AWS offers more than 20 dedicated networking and content delivery services, forming the backbone of modern cloud infrastructure. These powerful services enable global connectivity, enhanced security, and unprecedented scalability for mission-critical applications across 32 geographic regions and 102 availability zones worldwide.



Amazon Virtual Private Cloud (VPC)

1 Isolated Cloud Networks

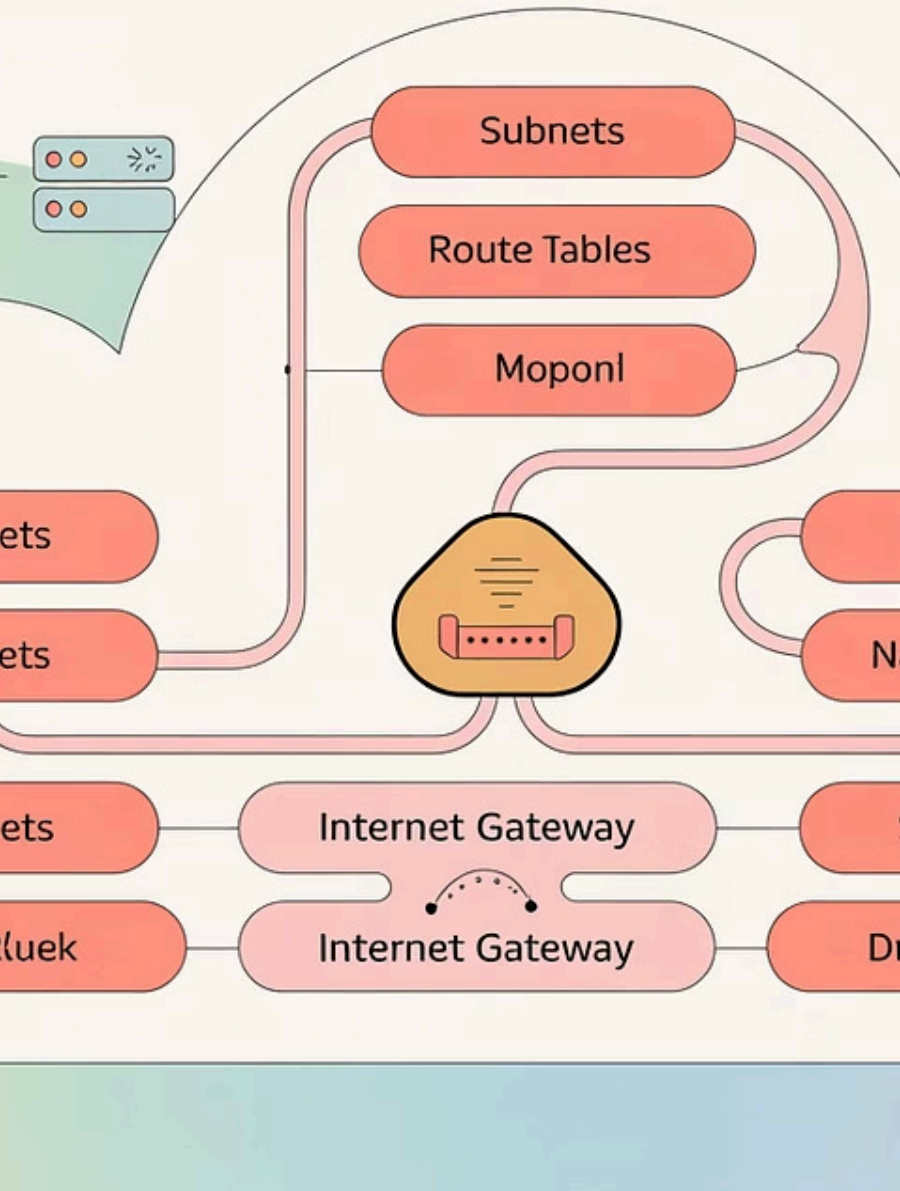
Create logically isolated sections of the AWS Cloud where you can launch resources in a virtual network that you define. Complete control over your virtual networking environment, including selection of your own IP address range and creation of subnets.

2 Network Control

Configure route tables and network gateways to customize network pathways. Establish private connectivity to other VPCs and on-premises networks through multiple connection options.

3 Security Features

Implement multiple layers of security through security groups and network access control lists (ACLs). Create public, private, and isolated subnets for different tiers of applications with varying security requirements.



AWS Direct Connect



Dedicated Private Connection

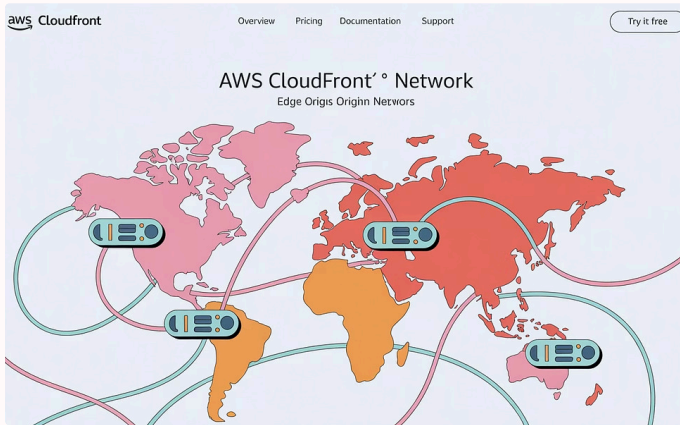
Establish a dedicated network connection from your premises to AWS data centers, bypassing the public internet entirely for enhanced security and performance.

Performance Benefits

- Reduce network costs during high-volume data transfers
- Increase bandwidth throughput up to 100 Gbps
- Deliver consistent network performance with reduced latency
- Support for hybrid cloud architectures requiring direct connectivity

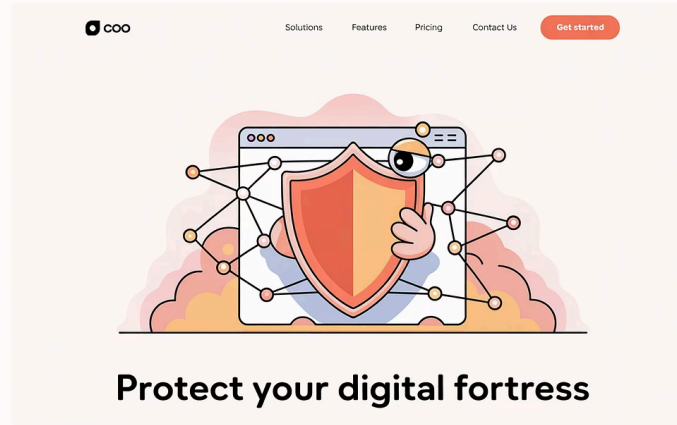
Direct Connect is particularly valuable for organizations with data-intensive workloads, compliance requirements for private connectivity, or applications sensitive to network performance.

Amazon CloudFront (Content Delivery Network)



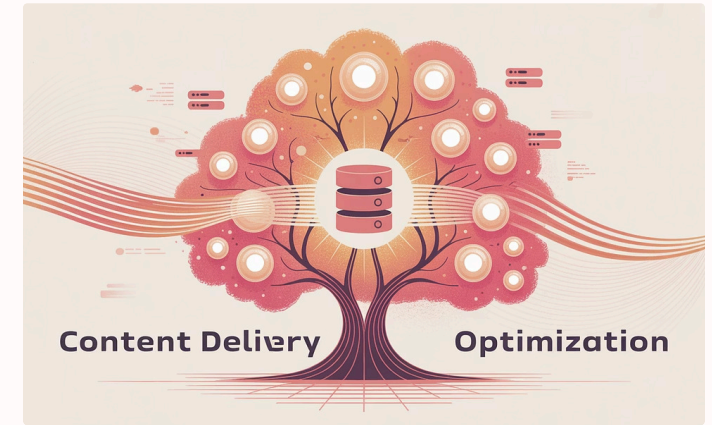
Global Edge Network

600+ points of presence worldwide deliver content with minimal latency regardless of user location. Strategic geographic distribution ensures fast, reliable access to your applications.



Security Integration

Built-in protection against common web exploits and DDoS attacks through AWS Shield integration. Web Application Firewall (WAF) compatibility adds an additional layer of protection for web applications.



Performance Optimization

Accelerates both static content delivery and dynamic content processing. Advanced caching capabilities and optimization features reduce origin load while improving end-user experience.

Elastic Load Balancing (ELB)



Application Load Balancer (ALB)

Operates at the application layer (HTTP/HTTPS) to route traffic based on content. Ideal for microservices and container-based applications with advanced routing capabilities.



Network Load Balancer (NLB)

Functions at the transport layer (TCP/UDP) to handle millions of requests per second with ultra-low latency. Perfect for high-performance applications requiring extreme throughput.

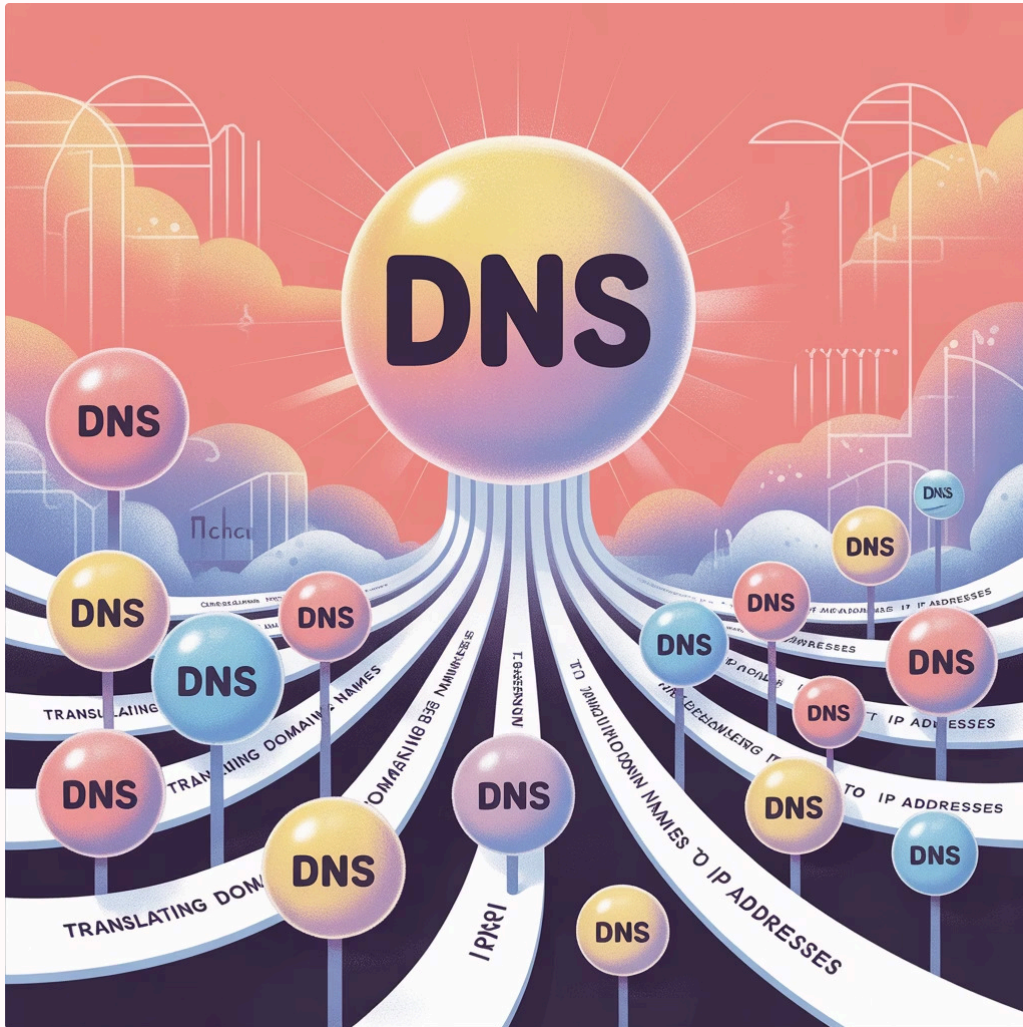


Gateway Load Balancer (GWLB)

Enables deployment and scaling of third-party virtual appliances like firewalls and intrusion detection systems. Simplifies network security implementation at scale.

All ELB types automatically scale to handle varying traffic patterns, continuously monitor application health, and distribute traffic only to healthy targets for maximum availability and fault tolerance.

Amazon Route 53 (DNS Web Service)



Global DNS Service

Route 53 provides highly available and scalable Domain Name System (DNS) web service with 100% availability SLA. It translates human-readable domain names into the numeric IP addresses that computers use to connect to each other.

Advanced Routing Capabilities

- **Latency-based routing:** Direct users to the AWS region with lowest network latency
- **Geolocation routing:** Route traffic based on user geographic location
- **Weighted round robin:** Distribute traffic across multiple resources in proportions you specify
- **Failover routing:** Redirect traffic to backup resources when primary resources are unavailable

Advanced Network Services

AWS Global Accelerator

Improves global application availability and performance using the AWS global network. Provides static IP addresses that serve as fixed entry points to your applications. Routes traffic through the AWS global network to optimal endpoints.



AWS PrivateLink

Enables secure connectivity between VPCs and services without exposing traffic to the public internet. Creates private endpoints for accessing services across different accounts and VPCs. Eliminates need for internet gateways, NAT devices, or public IP addresses.

AWS App Mesh

Service mesh that provides application-level networking for microservices. Standardizes how services communicate, giving end-to-end visibility and ensuring high availability. Compatible with Amazon ECS, EKS, Kubernetes on EC2, and Fargate.

These advanced services extend AWS networking capabilities beyond traditional infrastructure, providing specialized solutions for performance optimization, private connectivity, and microservice management.

Summary: Building Cloud Networks with AWS

66%

Cost Reduction

Organizations can lower network costs by up to 66% by migrating their networking infrastructure to AWS

20+

Network Services

Comprehensive suite of networking services to build secure, highly available infrastructure

32

Global Regions

Expansive geographical coverage enabling worldwide deployments with local presence

AWS networking services form the foundation of reliable cloud infrastructure, combining VPC for isolation, Direct Connect for hybrid deployments, CloudFront for content delivery, ELB for high availability, Route 53 for DNS management, and advanced services for specialized needs. This comprehensive ecosystem enables organizations to build secure, scalable, and high-performance network architectures tailored to their specific requirements.

[Free Practice Test](#)

[Online Training Course](#)